

**Eric Yuen Pak-ho**

**袁栢浩**

**Projects**      **作品**      05

**Chronology**      **年表**      49

Architecture / art / and / abstract / assemble / accurate / atlas / adapt / appropriate / arrange / articulate / amateur | **B**uild / be / beam / become / book / bricolage / biography / bibliography / body / blank / beer / balance / both | **C**onstruct / context / , / colour / crisis / critical / column / collage / chronology / contradiction / complicate / circle / circulate / climate / complex / culture / calm / criteria / cost / client / collaborate / continue / challenge / compose / confront | **D**raw / do / dot / decide / desire / data / datum /  $\Delta$  / devil is in the detail (dd) / dismantle / democracy / dance | **E**ducate / effort / element / environment / enter / ecology / economy / essence / elevation / 404 / 11 / empty / explore / eq | **F**iction / fact / fabric(ate) / field / fix / fragment / found / factor / factory / finite / F#\$% | **G**rid / ground / gold...en / grow | **H**istory / hut / hunger / hyperflexible / human / heat / here / homage | **I**nfrastructure / instrument / idea(l) / in(ex)terior / immediacy / I / impermanence / image / imagine / intuition / instinct / influence | **J**oy / join / joke / jack | **K**now / knowledge / kn / kg / k | **L**ine(weight) / life / love / light / light (the other one) / land / learn / length / linear / link / lineage | **M**aterial / mm / moment(um) / mundane / myth / measure / move / mesh / map / mean(ing) / model / multiple / music / make | **N**aivete / nature / now / new / never never / note / normal | **O**bservation(s) / order / opportunity / ordinary / out(in)side / other / option(s) / or / open / 1 / obsess / ornament / oasis / O / object / orientation | **P**recision / platform / perspective / position / point / problem / project / proportion / pattern / program / physical / perforate / permutate / plan(e) / pause / perform(ance) / place / play / promenade / particular / perpendicular / parallel | **Q**uestion / quality / quantity / quack! / quirk / quote / quiet! | **R**esponse / rational / relation / rigid / real / reason / recipe / ratio / repetition / revolt / ruin / region / ramp / resistance / room / rhythm / repair / relate / reference(s) / (re)solve / (re)solution | **S**tandard / scale / structure / service / space / sustain / suffer / stair / serious / shit happens / section / shape / start / square / study / state / single / simple / situation / schedule / set / series / slow / speed / shadow / sun | **T**hink / talk / try / 3<sup>rd</sup> / tension / 2 / 10 / transparency / territory / transient / torque / time / triangle / taxonomy / tinker / tweak | **U**niversal / utility / use / useless / user / unit / urban | **V**ariety / volume / vector / victory / ventilate / verse / version | **W**rite / work / words / VV / wander / wonder / wait! what? when? where? | **X** / xyz-axis / x\_x / xanax / XL | **Y**? / you / youth | **Z**oom / 0 / zone / zzzzzz.....

## Projects 作品



Hart Haus

06



Cao Fei Studio

07



Centre of Heritage, Arts and Textile

08



Apartment in Tai Kok Tsui

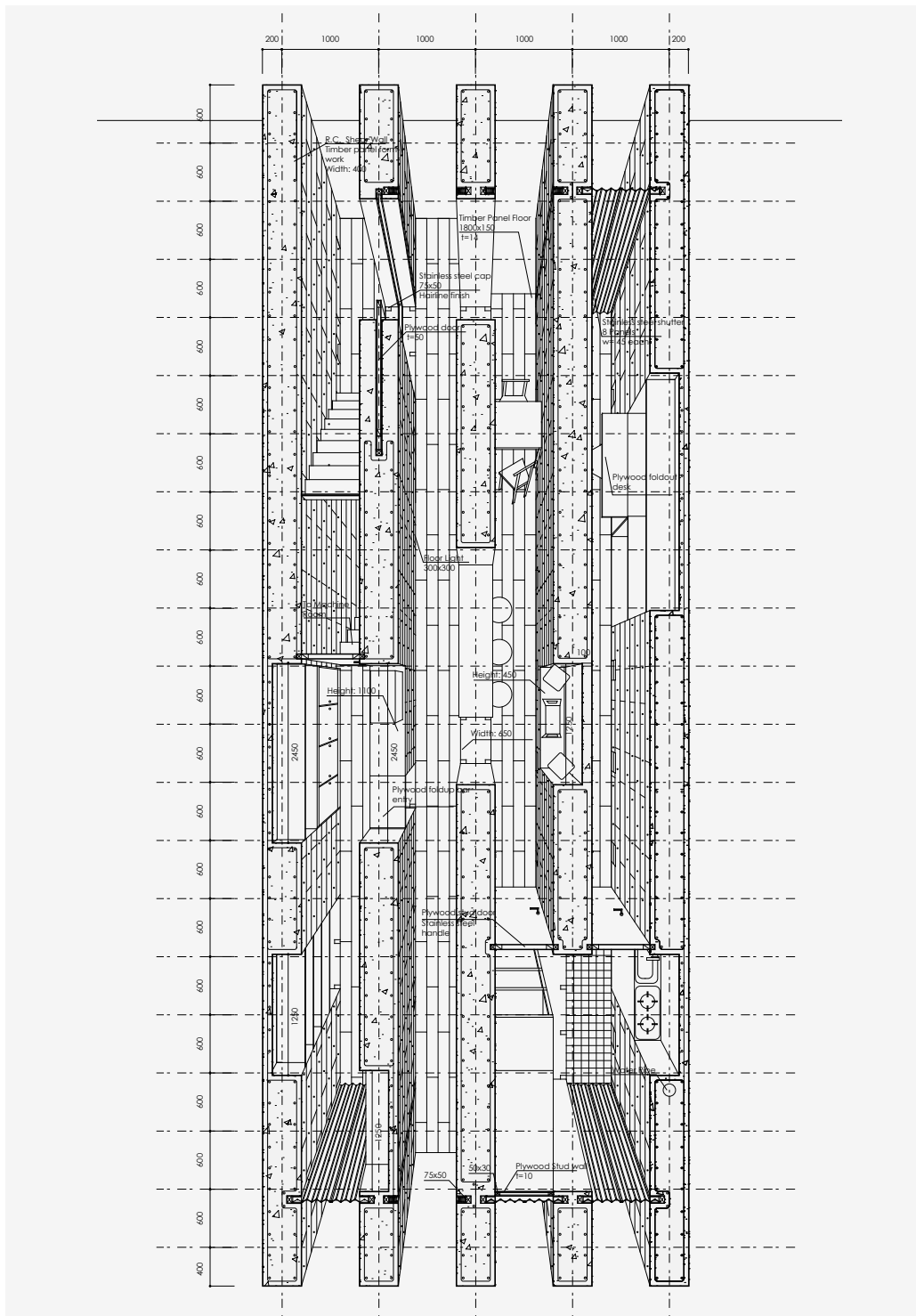
09



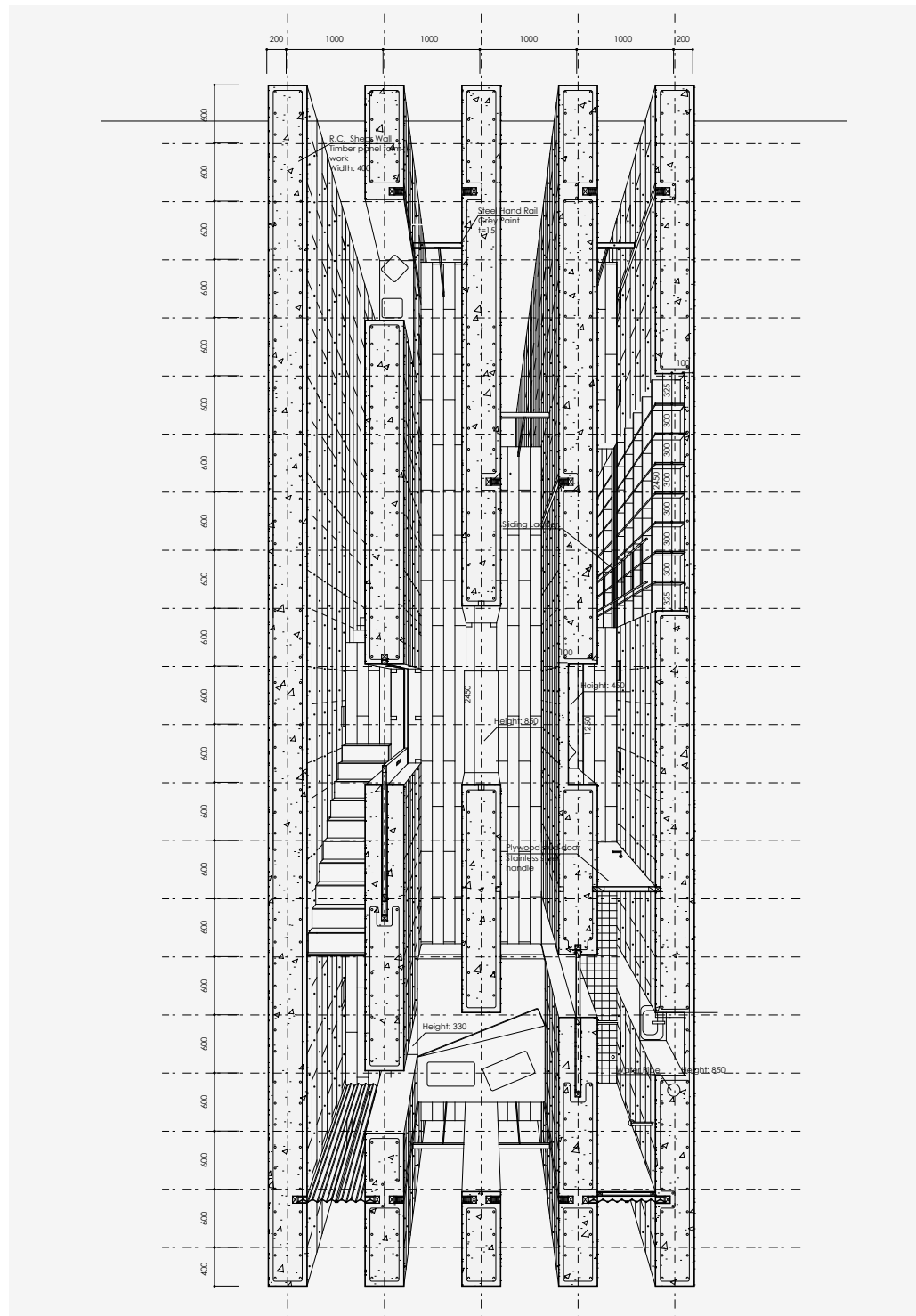
Eduard Malingue Gallery Shanghai



Nucleus Two



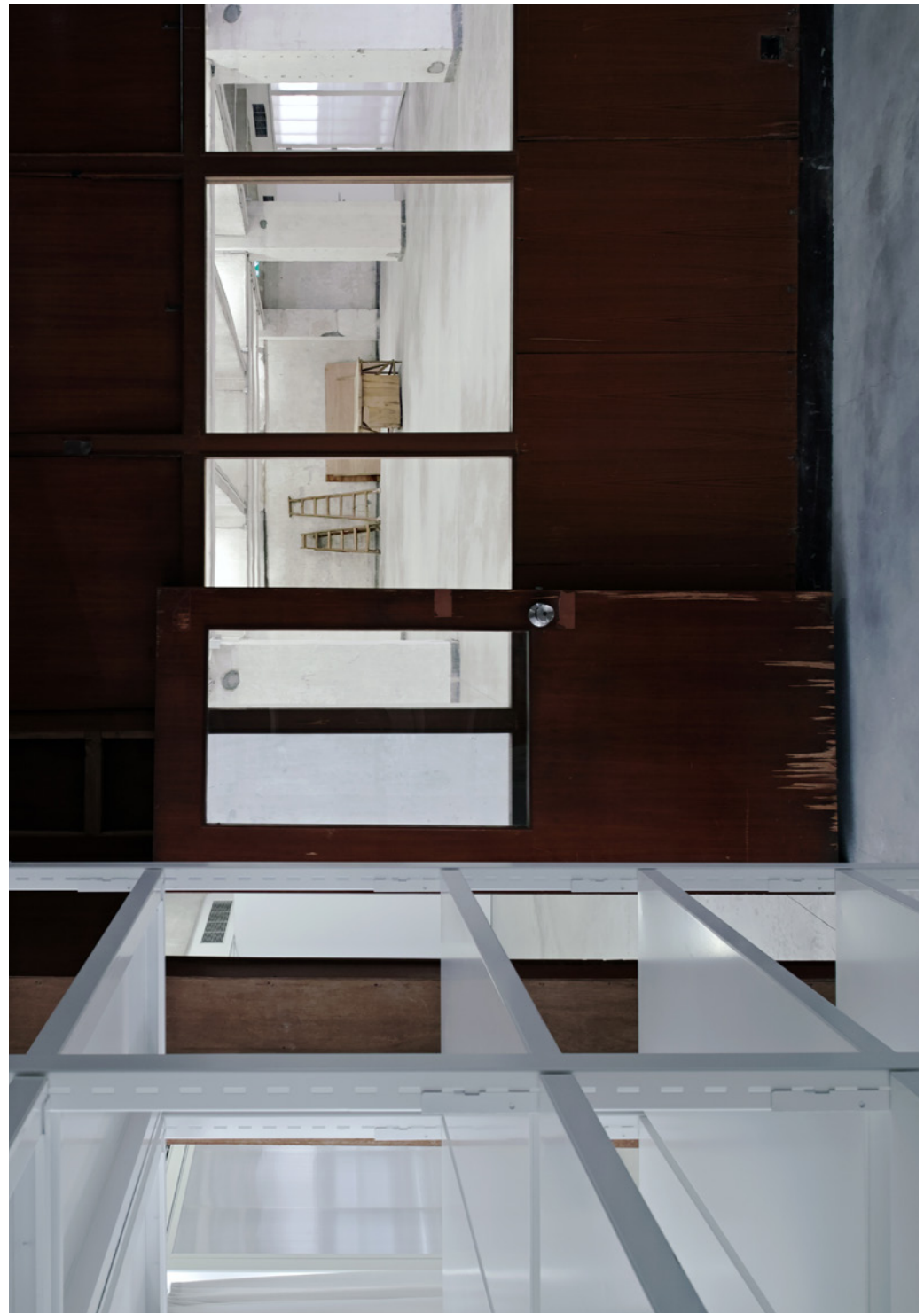
Thin House



Thin House



Hart Haus



Hart Haus





Edouard Malingue Gallery Shanghai



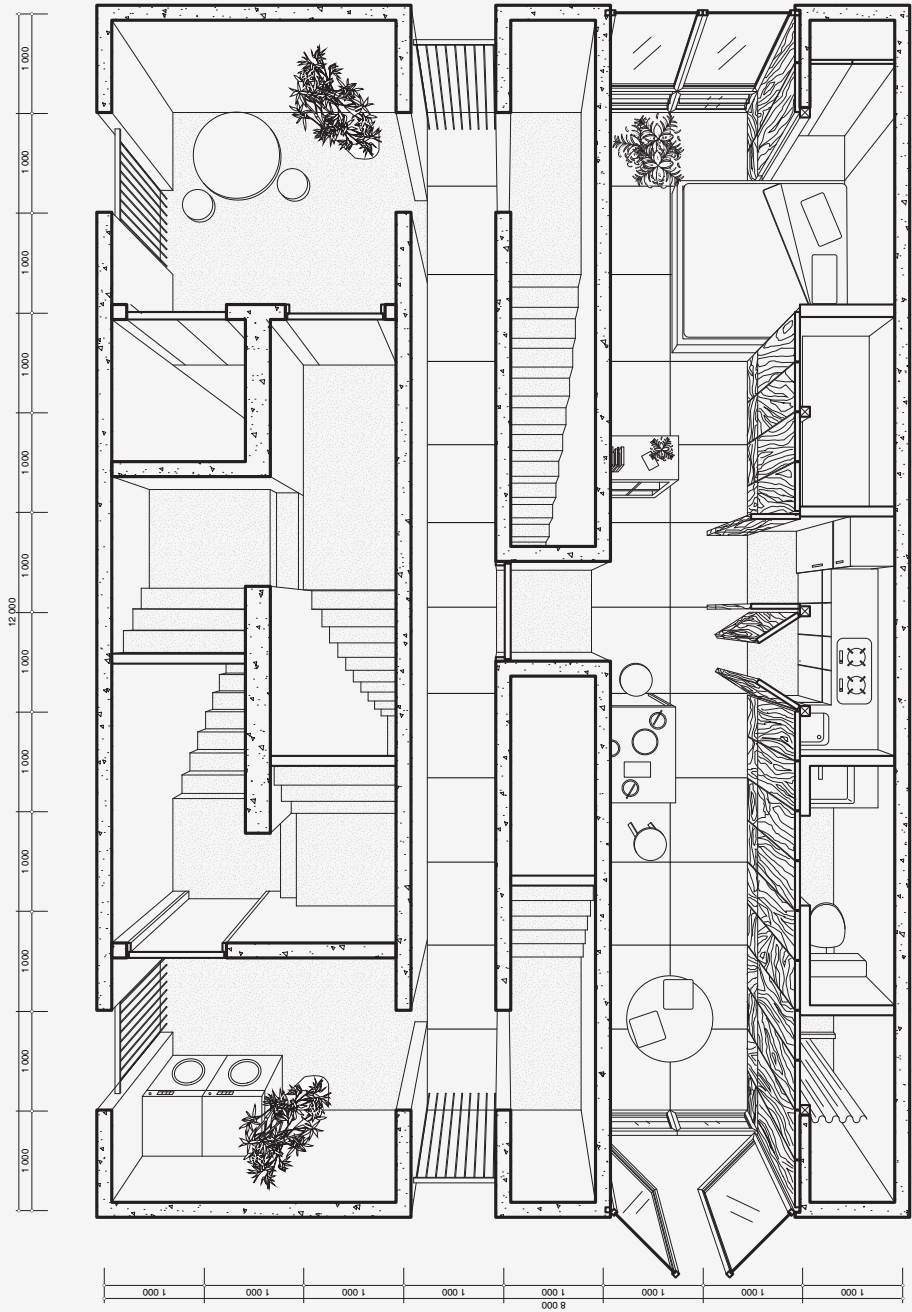
Edouard Malingue Gallery Shanghai



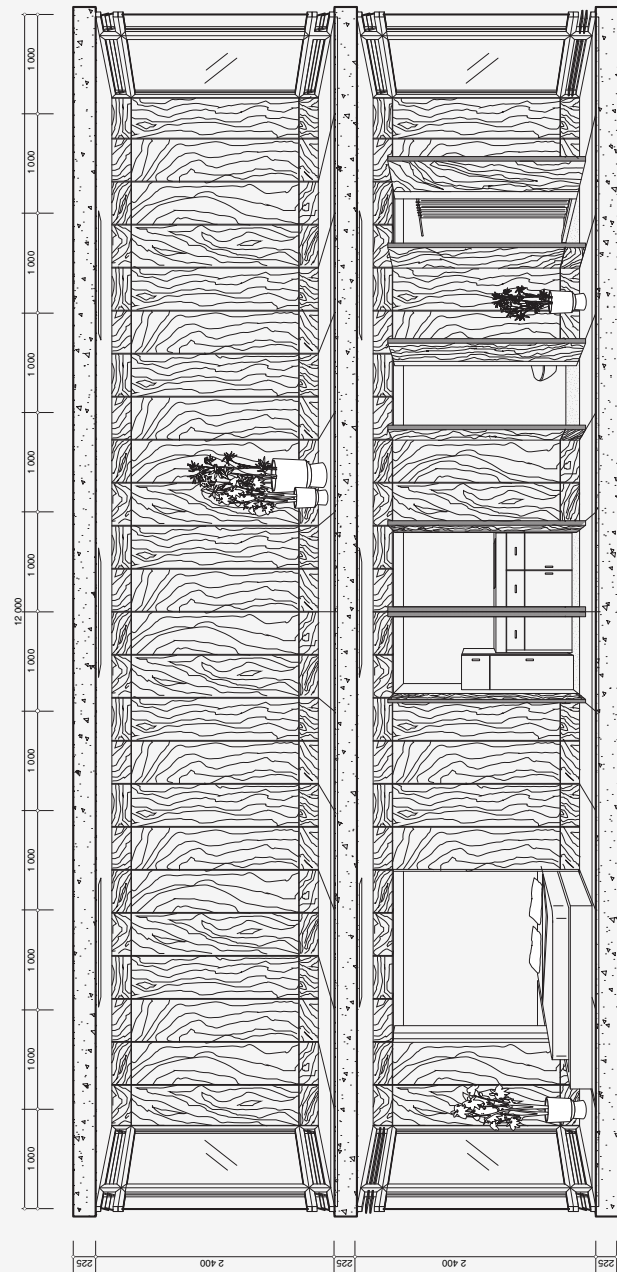
Apartment in Tai Kok Tsui



Apartment in Tai Kok Tsui



Apartment with Three Cores



Apartment with Three Cores



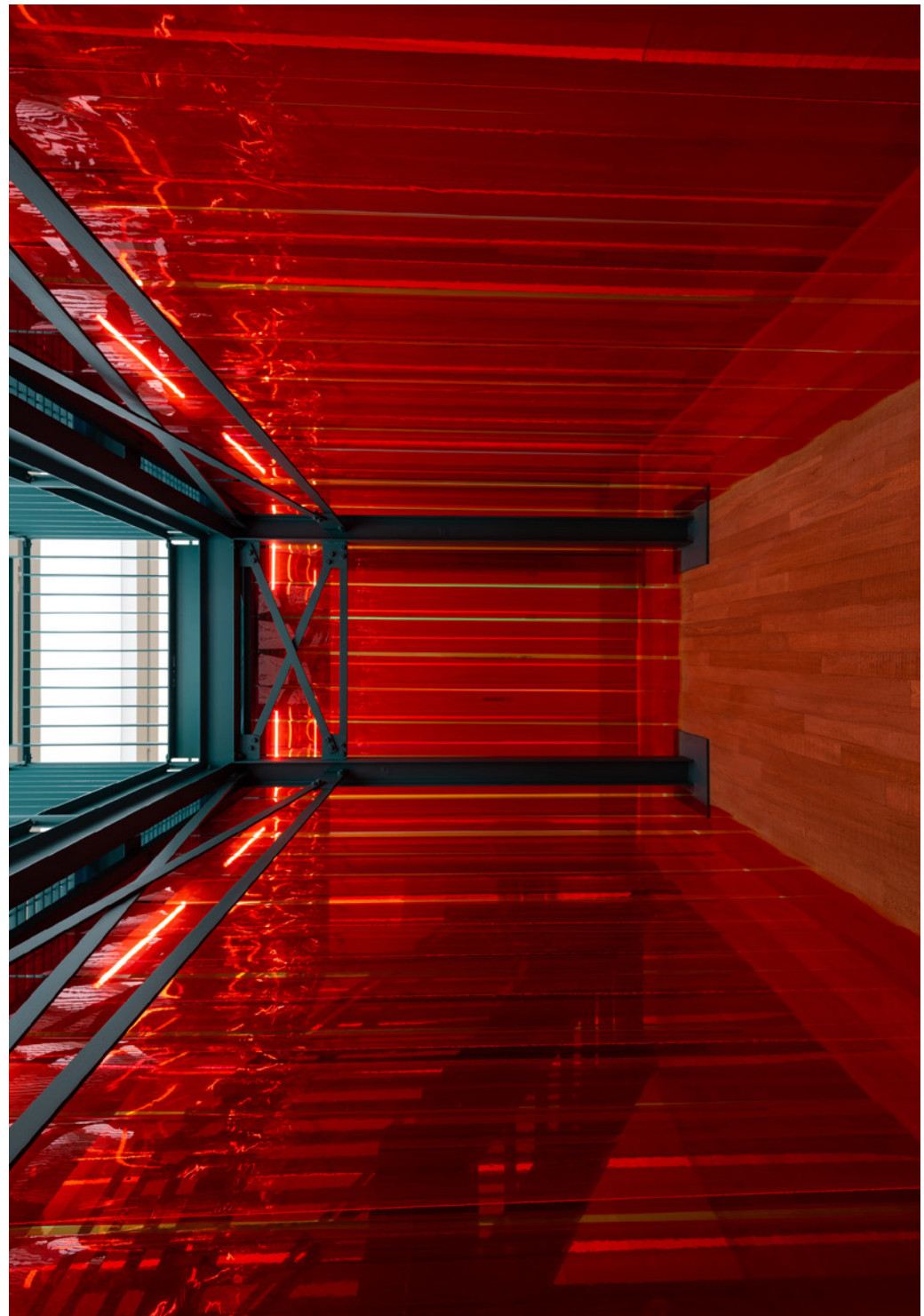
P - Space



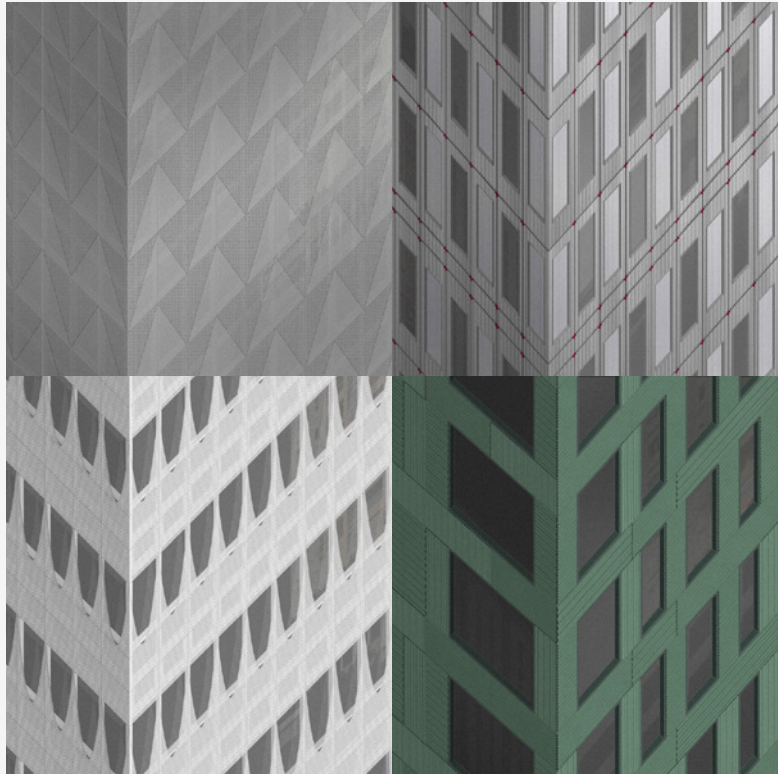
UABB 2019



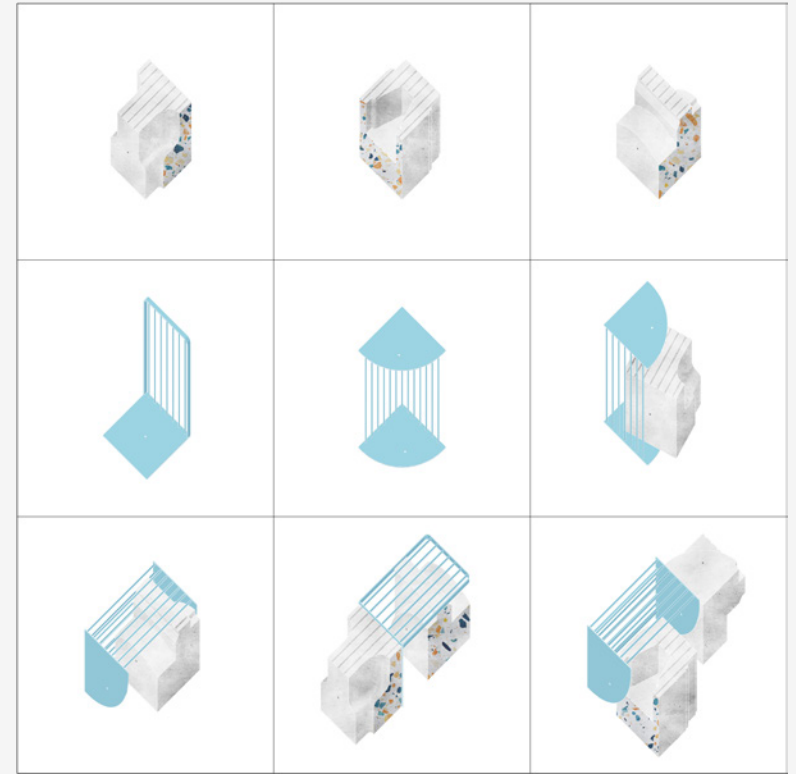
Nucleus Two



Nucleus Two



39 Kings Road Facade



P - Space



Apartment with One Room



Apartment with One Room



Edouard Malingue Gallery Shanghai



Zaha Hadid: There Should Be No End To Experimentation

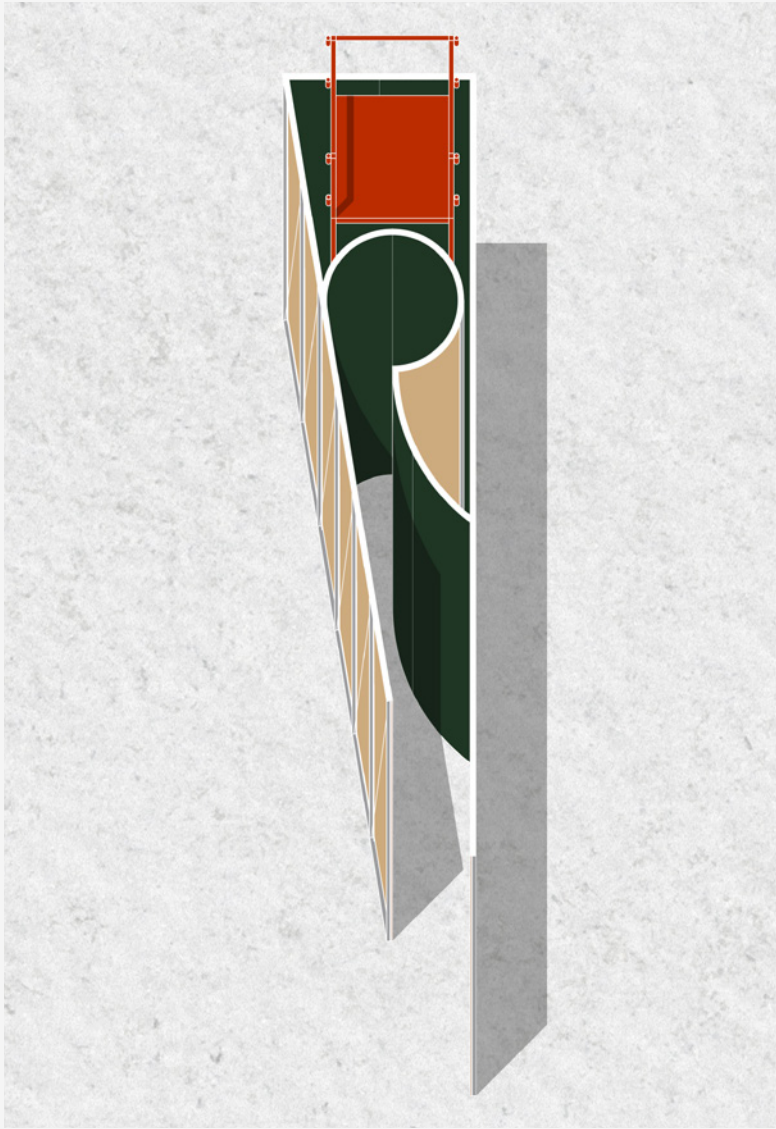




P-Space

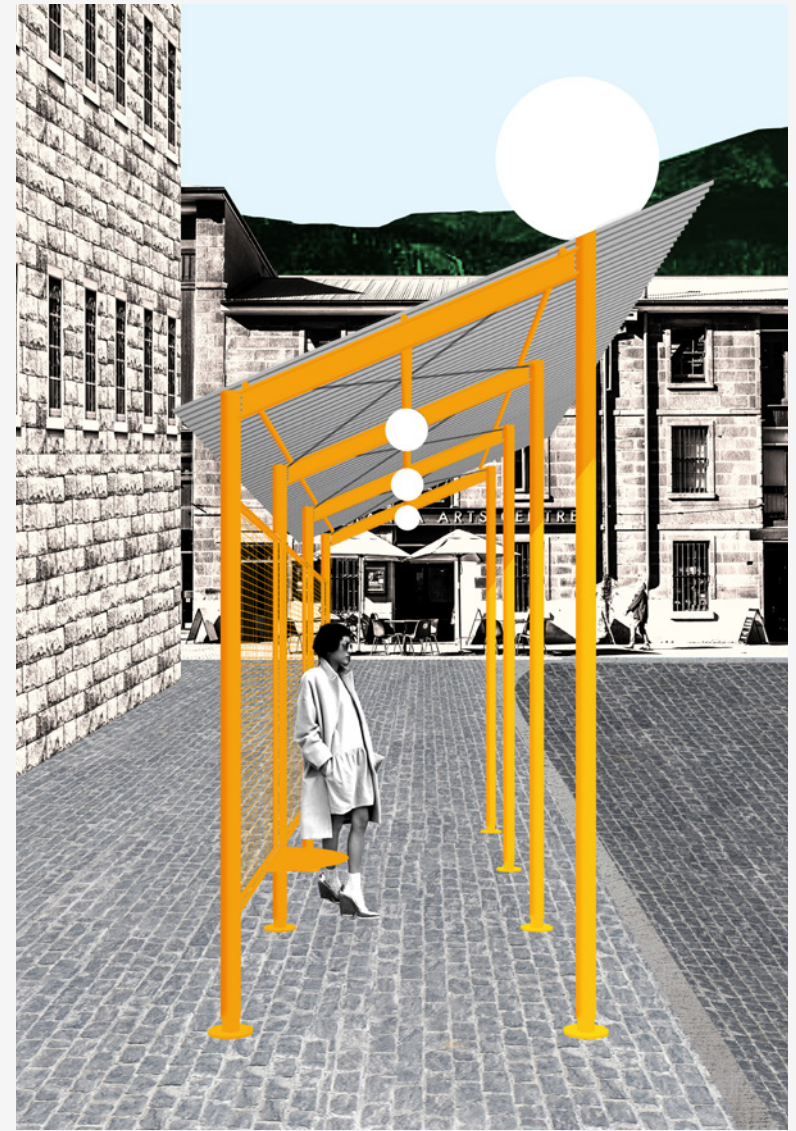


39 Kings Road Facade

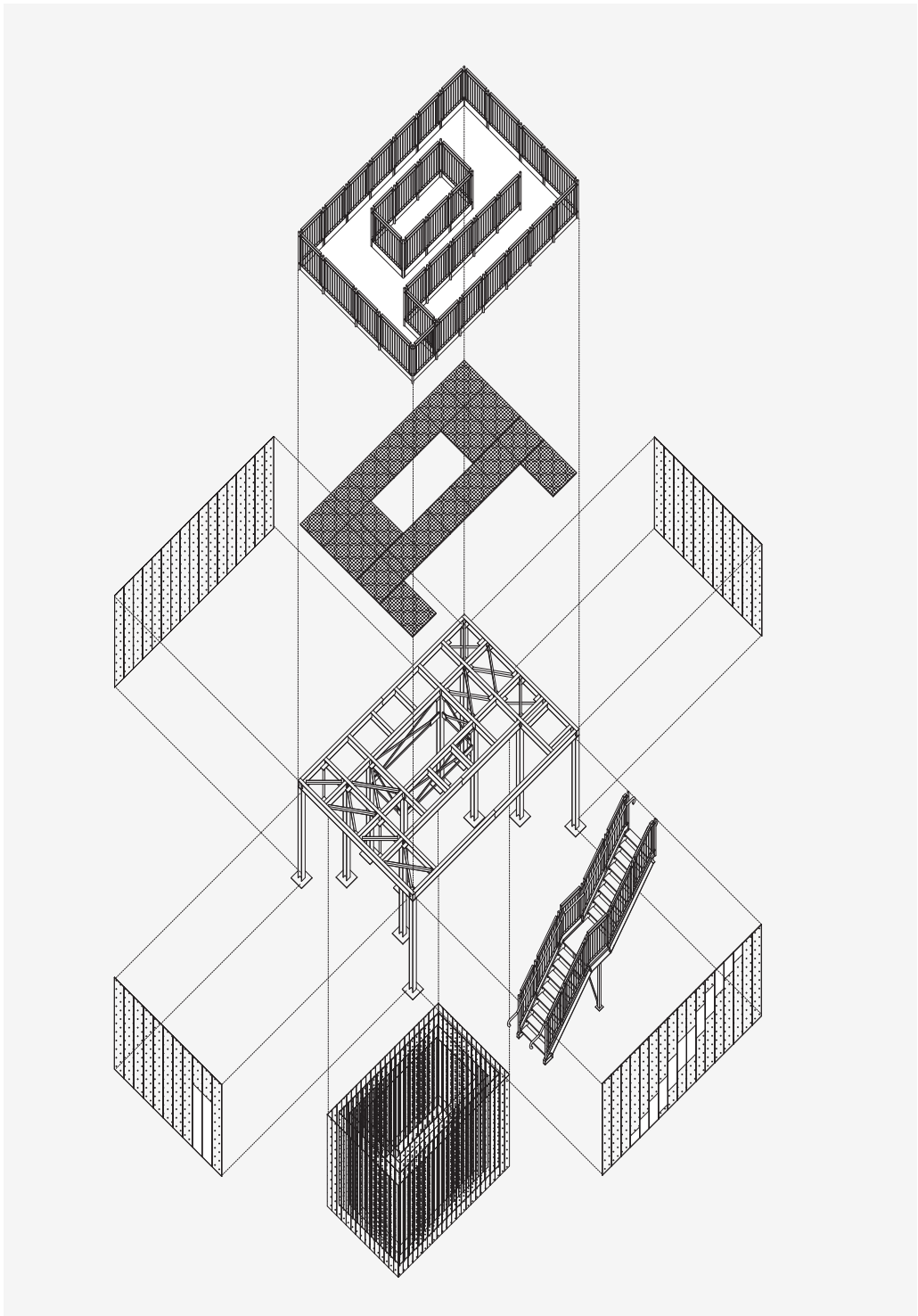




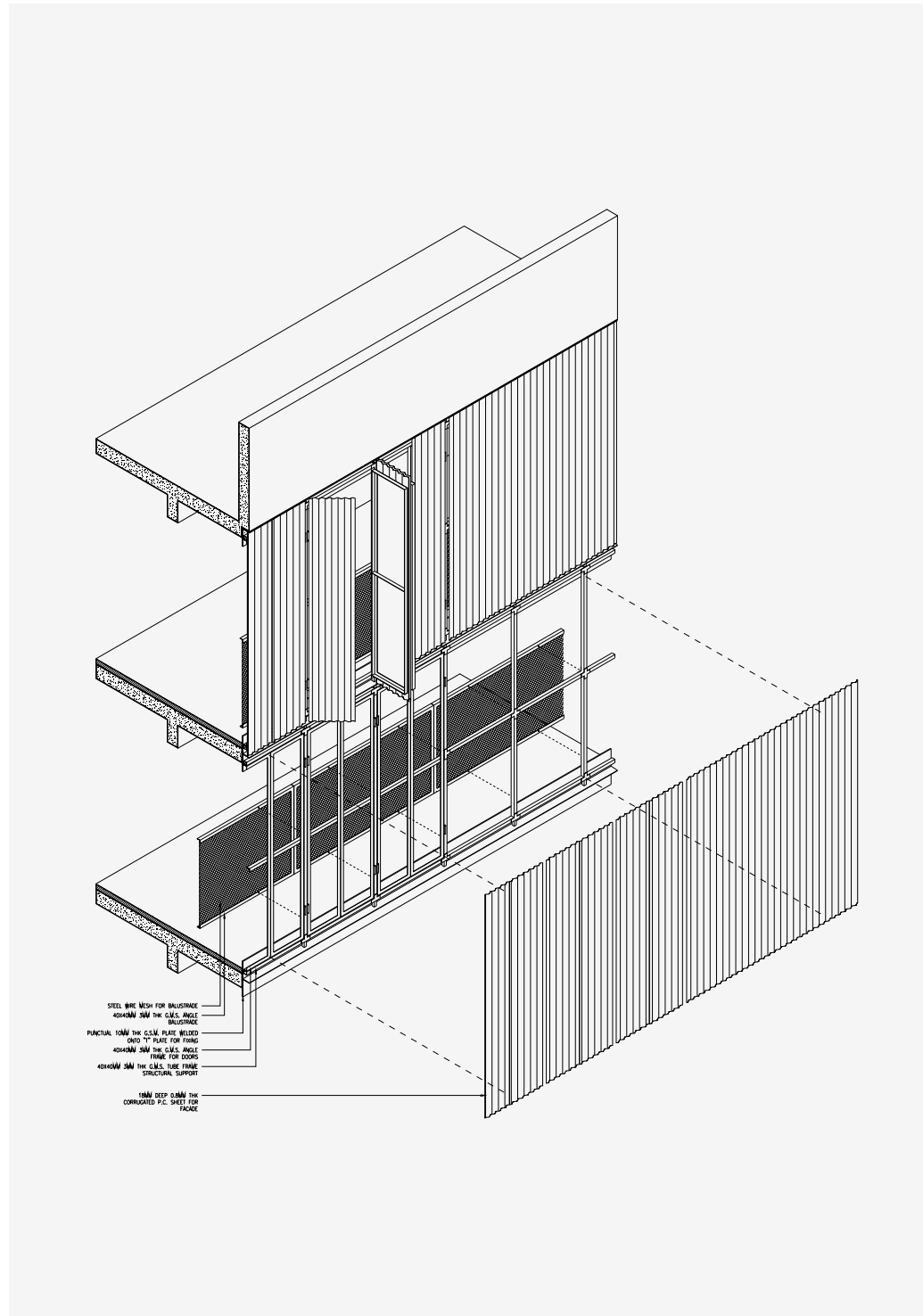
Shelter for the Urban Nomad



Hobart Bus Shelter



Nucleus Two



House in Peng Chau Facade



Centre of Heritage, Arts and Textile



Centre of Heritage, Arts and Textile



Apartment in Tai Kok Tsui

42



Hart House

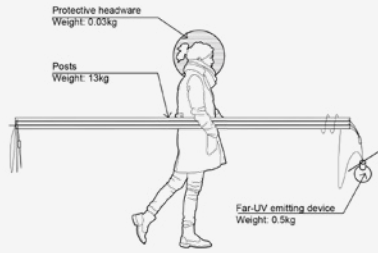
43



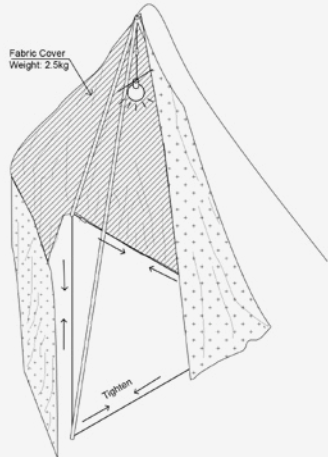
Centre of Heritage, Arts and Textile



Thin House



1. Bring SHELTER FOR URBAN NOMAD (S-FUN) to private-public infrastructures (PPI), such as shopping malls, metro stations, offices, cinemas, gymnasiums, etc.

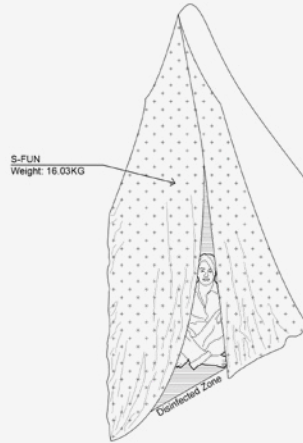


3. Turn on S-FUN to start disinfecting process. Wrap shelter with fabric sheet, such as linen, fabric curtain, tent cover. Enter tent and tighten turnbuckles to make base rigid. Proceed to steps 3a-3d.

SHELTER FOR THE URBAN NOMAD



2. Find comfortable spot located near power outlet to setup SFUN. Raise S-FUN and open base by pulling Far-UVC emitting device.



4. Fine tune tightness of turnbuckles until rigid. Enjoy disinfected private sphere inside PPI. Reminder to wear protective headware when leaving S-FUN to use utilities such as toilets provided by PPI.

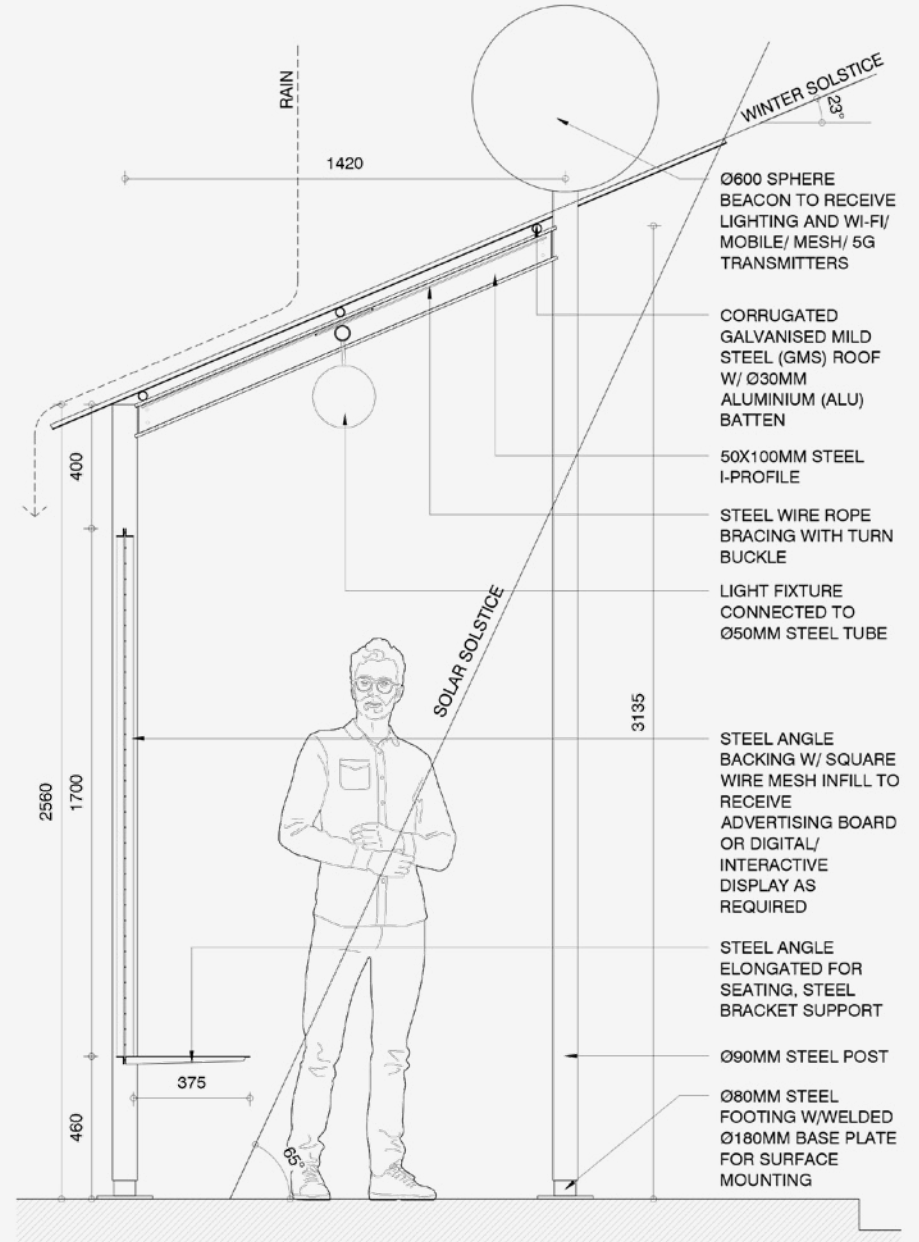
**WARNING:** Do not remove protective headware before entering SFUN to prevent chances of infection. Avoid touching face after touching protective headware

3a. Enter S-FUN with protective headware.

3b. Remove protective headware inside S-FUN.

3c. Cover Far-UVC emitting device with protective headware. Far-UVC emitting device will disinfect protective headware.

3d. Tighten turnbuckle until protective headware presses firmly against post to lock S-FUN in place.







**Chronology 年表**

## Thin House

Design / Completion: 2014

Location: Sai Ying Pun, Hong Kong

Use: Residential/ Shop

Project Area: 270 m<sup>2</sup>

Architect: Eric Yuen Pak-ho

Confronted with a thin and long site measured at 4.4m wide and 12.4m deep. The proposal amplifies the urban structure through a series of 0.4m thick concrete shear walls. The resultant spaces are 0.6m wide, with plywood flooring supported on joists at 0.6m intervals, creating a regular rhythm perpendicular to the linear spaces. These “pure” spaces are non-hierarchical, there is no clear differentiation between spaces of movement rest, awaiting appropriation.

## Edouard Malingue Gallery Shanghai

Design / Completion: 2016

Location: Xuhui, Shanghai

Use: Gallery

Site Area: 262 m<sup>2</sup>

Client: Edouard Malingue Gallery

Architect: BEAU Architects

Role: Project Manager

Phase: Concept to completion

Photography: Eric Yuen Pak-ho

A regular 8m x 23m floor is raised 50mm to mark the main space, beyond of which is left untreated as a foyer; as a prelude to the exhibition. Removable square stainless steel posts are installed in a 3m grid, with same sized U-channels housing lighting hung between the posts. They form the base to organise future scenography. Curtains are installed at the periphery to filter light and close the space off to the surrounding when required. A flexible scenographic device is created.

## Zaha Hadid: There Should Be No End To Experimentation

Design / Completion: 2017

Location: Quarry Bay, Hong Kong

Use: Exhibition

Client: Serpentine Galleries

Architect: BEAU Architects in Collaboration with Zaha Hadid Design

Role: Project Manager

Phase: Concept to completion

Photography: Gilles Vanderstocken

Exhibition design collaborating with Zaha Hadid Design and Serpentine Galleries displaying collection of Zaha Hadid’s early paintings and drawings. A perimeter wall wrapping around the existing envelope and 2 large walls are installed to divide the space into 3 main display areas for video, VR, and sketchbooks. Charcoal painted walls contrast with the works on display; white plinths display Zaha Hadid’s sketchbooks.

## Apartment with Three Cores

Design / Completion: 2017 (Competition Shortlisted)

Location: Mong Kok, Hong Kong

Use: Residential

Site Area: 96 m<sup>2</sup>

Architect: Eric Yuen Pak-ho

The tower consists of 3 solid cores that provide shared “common” areas, “circulation” spaces, and “services”; while acting as the main load bearing structure. The cores relieve functional burdens of spaces in between, creating airy void spaces ready for inhabitation. In each unit, utilities are placed in a 1m wide “service core”, which is accessible from the cross ventilated main space, 2m wide and 12m deep. This space, free from functional burden, can be freely adapted resident’s needs.

## Hong Kong: The Upside Down

Design / Completion: 2017  
Location: Hong Kong  
Use: Research

Hong Kong's development is capped by 2 parameters - land reserves for natural parks and interdiction of sub-division of existing living spaces. Both are currently being debated to open up for development and increase density for living. However, are any of these visions better for inhabitation? One removes nature to escape into, the other space to live, both decrease the livability of the city. While we debate, property rises continue to soar. Is there a third way out?

## Nucleus Two

Design / Completion: 2018  
Location: Central, Hong Kong  
Use: Installation  
Client: Tai Kwun Contemporary  
Artist: Gabriel Lester/ Polylester  
Architect: BEAU Architects  
Role: Project Manager  
Phase: Schematic to completion  
Photography: Courtesy of Tai Kwun Contemporary

Nucleus Two is an installation in collaboration with artist Gabriel Lester/ Polylester for Tai Kwun Contemporary Dismantling the Scaffold Exhibition. The structure is 7m long by 4.8 wide at 4m high. All the components are designed in regular modules and repetitive details, to allow for assembly and dismantling within 2 days. The result is an ordered structural platform. The intimate central space is defined by layers of coloured PVC strips, through this void, the layers and levels are all reconnected.

## P - Space

Design / Completion: 2018  
Location: Central, Hong Kong  
Use: Installation  
Client: Tai Kwun Contemporary  
Artist: Nadim Abbas  
Architect: BEAU Architects  
Role: Project Manager  
Phase: Concept to completion  
Photography: Eric Yuen Pak-ho

P - Space is a permanent installation in collaboration with artist Nadim Abbas for Tai Kwun Contemporary. It is an interplay of 0.7m concrete and by steel modules to form a play-scape. Concrete modules are inspired by motifs found on site; with a cut plane revealing debris collected from demolition works at the historic Central Police Station (Tai Kwun), material memory of the past. Steel modules reference existing jail bar sizes, painted in baby blue hue in contrast to their original forms.

## Hart Haus

Design / Completion: 2017-2018  
Location: Kennedy Town, Hong Kong  
Use: Gallery/ Studio  
Project Area: 818 m<sup>2</sup>  
Architect: BEAU Architects  
Role: Project Manager  
Phase: Concept to completion  
Photography: Leon Xu Liang

Hart Haus is organised around a central void, with only four existing columns and artificial lighting. Neighbouring studios act as service spaces, filtering light, treated air, art, and activities to occupy and spill into the central space. Large patios connected to the studios extend the spaces to the city. An existing wood box is kept as is, with a pallet rack installed and appropriated to provide lounge functions. It articulates a corridor of shared areas, running through all spatial layers, connecting space and time.

## Centre of Heritage, Arts and Textile

Design / Completion: 2015-2018  
Location: Tsuen Wan, Hong Kong  
Use: Gallery  
Site Area: 2,120 m<sup>2</sup>  
Client: Nan Fung Group  
Architect: BEAU Architects  
Role: Project Manager  
Phase: Schematic to Completion  
Photography: Angela Pang Ho Ho

The gallery embraces its context - the structure, external walls, and traces of wear and tear. Following the existing structure, the space is divided into 3 exhibition areas. Technical grids are hung in the main galleries, assembled from 3m by 3m steel modules. Light tracks are installed at its periphery. Each module is further divided into 16 squares; with general lighting installed at the quadrants; finally, round profiles form a cross at the centre to suspend objects. The technical grid provides all essential services for future exhibitions.

## Storefront

Design / Completion: 2018  
Location: Central, Hong Kong  
Use: Installation  
Architect: BEAU Architects  
Role: Project Manager  
Phase: Concept

The freestanding aluminium structure is a hybrid object - platform and signage, supported by 3 9cm diameter circular posts, forming a right angled triangle, welded on an 8mm thick steel plate. The signage, measuring at 3m x 4.4m, addresses the street, with horizontal wires to suspend artwork or messages. A 0.6m x 1.1m platform at the level of the signage can be accessed by the audience one by one via a spiral staircase at one of the posts, providing a new solitary level to experience the city and exhibition.

## Teaching Block CUHK SZ

Design / Completion: 2019  
Location: Longgang, Shenzhen  
Use: Education  
Site Area: 42,364 m<sup>2</sup>  
Architect: BEAU Architects in collaboration with CENTRAL/VS-A  
Role: Project Manager  
Phase: Concept

The Teaching Block installs a rectangular prism following the site perimeter, reinforcing a strong external site corner. A large tilted "green plaza" resolves the difference of level with the main pedestrian walkway. All floor plates have 2 rows of columns spanning the full length is 3m away from the facade, defining a habitable corridor. The 18m span between is freed up, allowing for flexible appropriation. The ground floor is fully openable and acts as an extension to the plaza; upper levels host lecture theatres and classrooms.

## SUSAS 2019

Design / Completion: 2019  
Location: Xuhui, Shanghai  
Use: Installation  
Architect: BEAU Architects in collaboration with Studio XL  
Role: Project Manager  
Phase: Concept

An assembly of lightweight steel support structures and tactile fabric panels form a clear boundary, reorienting the site towards the river. An object grows from the steel structure, and penetrates through the fabric, forming a balcony overlooking the square and the river. Audiences inside the theatre and on the balcony await the arrival of performances on the river. Alternatively, the gathering of masses becomes the show, with the geometric boundary as a backdrop for their everyday life.

Design / Completion: 2019  
Location: Bao'an, Shenzhen  
Use: Installation  
Architect: BEAU Architects  
Role: Project Manager  
Phase: Concept to completion  
Photography: Leon Xu Liang

2 paths are cut abruptly when meeting the square. These thresholds are now celebrated by adding 2 tiered installations. The installations are made of the same brick paving as the paths, extending them into the square. The ends are highlighted with grey-green steel plates reflecting the colours of the park and square. The steps provide a resting place overlooking the temporary artworks during the biennale; and more importantly, a space for people watching and play upon resumption of everyday life.

### Cao Fei Studio

Design / Completion: 2019  
Location: Chaoyang, Beijing  
Use: Studio  
Project Area: 227 m<sup>2</sup>  
Client: Cao Fei  
Architect: BEAU Architects (constructed by Lim Tzay Chuen)  
Role: Project Manager  
Phase: Concept to completion  
Photography: Peng Jing (edited by Leon Xu Liang)

The studio space for Artist Cao Fei connects 2 smaller workshops spaces into 1 large "L" shaped space. 5 structural bays, with the rhythm of structural column and beams frame an open field that freely receives objects and furniture. 2 regular volumes are partitioned at both ends, to house a private office, pantry, restrooms and storage. Finally, curtains open and close to freely subdivide the generous main space into separate zones for various functions, such as work, display, and meetings.

### Apartment in Tai Kok Tsui

Design / Completion: 2019  
Location: Tai Kok Tsui, Hong Kong  
Use: Residential  
Project Area: 36 m<sup>2</sup>  
Client: Private client  
Architect: Eric Yuen Pak-ho  
Photography: Eric Yuen Pak-ho

A 2 bedroom dwelling for a couple. The space performs as a flexible vessel to receive lifestyles of current and future occupants. The proposal provides an optimised regular shaped main room with direct access to service spaces. Private rooms are recessed away from the main through a single transitional space. Only essential finishes and cabinetry are provided and articulated as added layers. The outlines of receiving rooms can be clearly read. Regular, well proportioned spaces provide a background for life.

### Tongren Road

Design / Completion: 2018-Ongoing  
Location: Jing'an, Shanghai  
Use: Residential/ Gallery  
Project Area: 170 m<sup>2</sup>  
Client: Private client  
Architect: BEAU Architects  
Role: Project Manager  
Phase: Concept to construction

Located within a heritage apartment building, the Client had demolished all the latest walls and finishes, revealing accumulated traces from different eras. All the traces are kept, and a open space is created with a bath in the centre for artist intervention. 4 objects define different zones and provide basic storage and services. Each object is mechanically assembled by posts, frame, case, shelves, and door. They also act as art display, with different ways to exhibit art by reorganising these various components.

## Peng Chau House Facade

Design / Completion: 2018-Ongoing

Location: Peng Chau, Hong Kong

Use: Residential

Client: Private client

Architect: BEAU Architects in collaboration with Wut Tung Sat

Role: Project Manager

Phase: Concept to construction

A facade for a house in Peng Chau in collaboration with Wut Tung Sat. Corrugated polycarbonate panels wrap around the building volume to act as a rain shield protecting an open corridor, while allowing for light to filter through. The panels and operable doors are mechanically fixed onto square steel studs that provide a regular interior rhythm. Connections for horizontal and vertical members are celebrated by cross plates to minimise welding needed, enabling easy assembly, and more importantly, disassembly.

## 39 Kings Road Facade

Design / Completion: 2019-Ongoing

Location: Tin Hau, Hong Kong

Use: Office

Client: Henderson Land Development Limited

Architect: BEAU Architects in collaboration with VS-A

Role: Project Manager

Phase: Concept to construction

A grid is set up divided in regular 1:2:3 ratio (corner: fixed panel: window), setting down the facade grid.

A 50mm air gap separates the corrugated aluminium cladding panels from the main weatherproof and insulation, which acts as a heat sink and rain shield.

The facade provides large wall surfaces rarely found in office spaces. This also allows for clean connections of interior walls to the facade and flexible interior subdivision.

## Shelter for the Urban Nomad

Design / Completion: 2020

Location: Hong Kong

Use: Installation

Architect: Eric Yuen Pak-ho

The shelter is a lightweight structure weighing 18kg, mechanically assembled for easy disassembly. 3 aluminium posts are connected in tension by wire cables, to form a tetrahedron with a perfect 2m sided base at 2.8m high. At the tip, a Far Ultraviolet C (Far-UVC) emitting device, to disinfect and create a bio-secure shelter, is connected to a resin sphere locking the tetrahedron structure in place by compression. A fabric covers the overall structure, sheltering the urban nomad from the vast interiority it is situated in.

## Hobart Bus Shelter

Design / Completion: 2020

Location: Hobart, Tasmania

Use: Infrastructure

Architect: Eric Yuen Pak-ho

The bus shelter is designed as a lightweight flexible infrastructure with simple mechanical kit-of-parts assembly, allowing the bus shelter to extend and contract as required and ease of dismantling and relocation as future requirements evolve. An LED beacon signals the bus stop, with lighting at night. It also embodies various transmission devices. The backing ensures the shelter breathes, while providing security. The painted wire mesh backing, can receive traditional and digital communication.

## A-side/ B-side

Design / Completion: 2020

Location: Toronto, Ontario

Use: Installation

Architect: Eric Yuen Pak-ho

A perimeter is set up around the red lifeguard stand. Plywood panels are propped up by steel slotted angles and braced with cables. The continuous wall folds into a triangle. At the tip, the intense green interior extends out, invites you in. The space gradually opens until a curve compresses the space, enough for one person to squeeze through. You reach a circular well. You look up. Beyond the red lifeguard stand is the sky, you notice sounds often taken for granted - the waves, the birds, the breeze, the cars, the city.

## Apartment with One Room

Design / Completion: 2020

Location: Tai Kok Tsui, Hong Kong

Use: Residential

Project Area: 36 m<sup>2</sup>

Client: Private client

Architect: Eric Yuen Pak-ho

How can an apartment expand and contract according to the inhabitants' different daily routine?

A large operable partition is placed under the central beam dividing the overall apartment in 2 halves. A curtain further separates the sleeping quarter located at the very end of the room. As the openness varies, the resulting room simultaneously becomes an extension of the living and resting areas. It is a large room that responds to the changing needs of inhabitants' daily lives.

**Eric Yuen Pak-ho**  
**袁栢浩**

eric-yuen.ph@gmail.com  
+61 406 869 086  
www.eric-yuen.com

2019 - Studio EricYuen  
2016 - 2020 Project Manager at BEAU Architects  
2013 - 2015 Master of Architecture at University of Hong Kong  
2012 - 2014 Assistant Architect at Urbanus Architecture and Design  
2009 - 2012 Bachelor of Architecture at University of New South Wales



**Eric Yuen Pak-ho**

**袁栢浩**